



EMORY

NELL HODGSON
WOODRUFF
SCHOOL OF
NURSING

Adopting Narrative Medicine for Nursing Student Learning Activities to Advance Competency in Social Determinants of Health

Carrie McDermott, PhD, Autherine Abiri, DNP, Jasmine Irish, MPH, Roxana Chicas, PhD
Nell Hodgson Woodruff School of Nursing, Emory University



EMORY

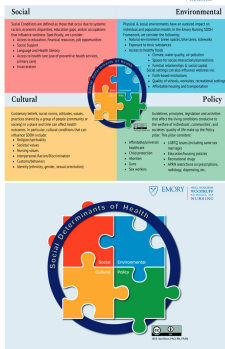
NELL HODGSON
WOODRUFF
SCHOOL OF
NURSING

Introduction

- Social determinants of health (SDoH) have a major impact on health outcomes and health disparities. It is recommended that nursing programs integrate SDoH into didactic and clinical courses
- An assessment of student competence in SDoH (n=65) identified students' lowest levels of confidence with environmental aspects such as climate change, and proximity to crime and violence
- Narrative medicine allows us to see the context of our patients and their circumstances more clearly to improve the effectiveness of healthcare. The central tenants are relationality and emotion, the philosophies of embodiment, ethicality, participatory pedagogy, close reading, creativity, and clinical practice.
- The purpose of this project was to employ narrative medicine techniques to build on nursing students' understanding and advance prelicensure student competence in assessing and addressing environmental factors in SDoH.

Figure #1

NHWSO SDOH Framework



Hamilton, J., Swan, B., & McCauley, L. (2023)

Processes and Procedures

Narrative medicine allows us to see the context of our patients circumstances to improve the effectiveness of healthcare.

- Narrative medicine activities were created to bring a deeper understanding of the role of environmental factors on SDoH.

Climate Health Activity

1. Read Denver Post Article <https://www.denverpost.com/2022/01/08/marshall-fire-avista-good-samaritan-evacuation/>

2. Discuss photo

Figure #1

Photo of Nurses Preparing for Hospital Evacuation



Photo Courtesy of Wendy Cardona

Discussion Prompts:

- a) Look closely at this photo for at least 30 seconds. What emotions, feelings, thoughts arise as you look at it.
- b) Imagine you are in the picture; how would you be feeling in this moment?
- c) What healthcare challenges do you anticipate the community to face in the aftermath of a fire?



The Parallel Chart

1. The parallel chart is a narrative tool used to integrate patients' stories into clinical practice. This reflective analysis is a useful method for providing patient-centered care.
2. A detailed case study of a heart failure patient whose life was impacted by incarceration of a family member.
3. After reading the patient's chart, use the discussion questions to identify approaches to assess and address the medical and social concerns for the patient.

Discussion Prompts:

- a) What emotions does the patient's chart invoke in you?
- b) What emotions do you anticipate the patient is experiencing?
- c) Identify additional questions you would consider asking to uncover barriers to her care?
- d) Discuss what you would consider as social and medical priorities for the patient during this visit?
- e) Discuss what you believe to be the patient's priority concerns today from her perspective?
- f) What is your plan to meet the patient's social and medical needs?

Results

After completing the narrative medicine activities students will be given a survey using pre-post retrospective evaluation on the effectiveness of the lesson on competence with environmental barriers to SDoH.

Implications

Despite a commitment to integration of SDoH into nursing education there exists a gap in the competence of nursing students to effectively assess and address SDOH. Narrative medicine is a novel educational tool that employs arts and humanities to nurture healthcare students' observation skills and deepen the therapeutic relationship, appreciating the importance of personhood and intersubjectivity in clinical experience. Nursing students find it particularly challenging to address the environmental aspects of SDoH. Innovative teaching methods, such as narrative medicine, are needed to prepare nurses to confront the environmental health disparities of the future.

Bibliography

<https://www.denverpost.com/2022/01/08/marshall-fire-avista-good-samaritan-evacuation/>

Charon, Rita, 'A Framework for Teaching Close Reading', *The Principles and Practice of Narrative Medicine* (New York, 2016; online edn, Oxford Academic, 1 Nov. 2016), <https://doi.org.proxy.library.emory.edu/10.1093/med/9780199360192.003.0009>, accessed 20 June 2023.

Hamilton, J., Swan, B., & McCauley, L. (2023). *Integrating a social determinants of health framework into Nursing Education*. Springer International Publishing AG.

LeClair, J. & Potter, T. (2022). Planetary Health Nursing. *AJN, American Journal of Nursing*, 122 (4), 47-52. doi: 10.1097/01.NAJ.0000827336.29891.9b.

Funding

Funding: The Health Resources and Services Administration (HRSA) Health Equity and Literacy: Training for Optimal RN Efficacy in Acute Care (2HEAL), PI Roxana Chicas